



Medical and Surgical Care of Patients With Mesothelioma and Their Relatives Carrying Germline BAP1 Mutations

Michele Carbone, MD, PhD,^{a,*} Harvey I. Pass, MD,^b Guntulu Ak, MD,^c H. Richard Alexander Jr., MD,^d Paul Baas, MD,^{e,f} Francine Baumann, PhD,^a Andrew M. Blakely, MD,^g Raphael Bueno, MD,^h Aleksandra Bzura, MSc,ⁱ Giuseppe Cardillo, MD, FRCS, FECTS,^j Jane E. Churpek, MD, MS,^k Irma Dianzani, MD, PhD,^l Assunta De Rienzo, PhD,^h Mitsuru Emi, MD,^m Salih Emri, MD,ⁿ Emanuela Felley-Bosco, PhD,^o Dean A. Fennell, FRCP, PhD,ⁱ Raja M. Flores, MD,^p Federica Grosso, MD,^q Nicholas K. Hayward, PhD,^r Mary Hesdorffer, NP,^s Chuong D. Hoang, MD, FACS,^t Peter A. Johansson, PhD,^r Hedy L. Kindler, MD,^u Muaiad Kittaneh, MD,^v Thomas Krausz, MD, FRCPath.,^w Aaron Mansfield, MD,^x Muzaffer Metintas, MD,^c Michael Minaai, BS,^a Luciano Mutti, MD,^y Maartje Nielsen, MD,^z Kenneth O'Byrne, MD,^{aa} Isabelle Opitz, MD,^o Sandra Pastorino, PhD,^a Francesca Pentimalli, PhD,^{bb} Marc de Perrot, MD, MSc, FRCSC,^{cc,dd} Antonia Pritchard, PhD,^{ee} Robert Taylor Ripley, MD,^{ff} Bruce Robinson, MD,^{gg} Valerie Rusch, MD,^{hh}

*Corresponding author.

Disclosure: Drs. Carbone and Yang report receiving funding from the National Institute of Environmental Health Sciences 1R01ES030948-01, the National Cancer Institute (NCI) 1R01CA237235-01A1 (and 1R01CA198138 (Dr. Carbone), the U.S. Department of Defense W81XWH-16-1-0440 (Drs. Yang, Carbone, and Pass), and the UH Foundation through donations from the following: the Riviera United-4-a Cure (Drs. Carbone and Yang), the Melohn Family Endowment, the Honeywell International Inc., the Germaine Hope Brennan Foundation, and the Maurice and Joanna Sullivan Family Foundation (Dr. Carbone). Dr. Carbone has a patent issued for BAP1. Drs. Carbone and Yang have two patents issued for HMGB1. Dr. Carbone is a board-certified pathologist who provides consultation for pleural pathology, including medical-legal. Drs. Pass and Yang report receiving funding from the Early Detection Research Network NCI 5U01CA214195-04. Dr. Pass reports receiving funding from Genentech and Belluck & Fox, LLP. Dr. Baas reports receiving grants and other from Bristol Myers Squibb and Merck Sharp & Dohme; and other from Aldeyra, BeiGene, Pfizer, and AstraZeneca, outside of the submitted work. Dr. Bueno reports receiving grants from MedGenome, Roche, Verastem, Gritstone, Epizyme, Siemens, Merck, NCI, U.S. Department of Defense, National Institutes of Health (NIH), and Genentech, outside of the submitted work. Dr. Bueno has also a patent 7,622,260 licensed to Brigham and Women's Hospital (BWH), a patent 8,450,057 licensed to BWH, a patent 8,551,700 licensed to BWH, and a patent 9,446,050 licensed to BWH and Patents/Equity in Navigation Sciences. Dr. Churpek reports receiving other from UpToDate, Inc., outside of the submitted work. Dr. Dianzani has been appointed by the public prosecution office to discuss court cases with asbestos-related neoplasms. Dr. Fennell reports receiving nonfinancial support from Clovis Oncology, Eli Lilly, Roche, and GlaxoSmithKline; grants and personal fees from Bristol Myers Squibb; personal fees and nonfinancial support from Merck Sharp & Dohme; personal fees from Targovax and Inventiva; nonfinancial support from Atlas and Imagen Therapeutics; and grants from Bayer and Astex Therapeutics, outside of the submitted work. Dr. Hayward reports receiving grants from the National Health and Medical Research Council, during the conduct of the study. Dr. Kindler reports receiving personal fees, nonfinancial support, and other from AstraZeneca and Merck; personal fees and other from Bayer, Bristol-Myers Squibb, Deciphera, and Inhibrx;

personal fees and nonfinancial support from Boehringer-Ingelheim, Pareadox Therapeutics, and Inventiva; personal fees from Kyowa and Novocure; and other from Aduro, GlaxoSmithKline, Harpoon, Lilly, Polaris, Verastem, Blueprint, and Tesaro, outside of the submitted work. Dr. Kittaneh reports being employed by ICON Clinical Research. Dr. Mansfield reports having consulting or advisory role (honoraria to institution) from Janssen, Genentech, Bristol Myers Squibb, AbbVie, and AstraZeneca; receiving travel, accommodation, and expenses from AbbVie and Roche; receiving research funding from Novartis, NIH, and Mark Foundation; and serving in the board as nonremunerated member of the Mesothelioma Applied Research Foundation. Dr. O'Byrne has received advisory board and/or speaker bureau and/or meeting travel/registration support from Bristol Myers Squibb, Merck Sharp & Dohme, Roche, and AstraZeneca. Dr. Opitz reports receiving personal fees from Roche and AstraZeneca and grants from Roche and Medtronic, outside of the submitted work. Dr. de Perrot reports receiving personal fees from Bayer, Actelion, and AstraZeneca, outside of the submitted work. Dr. Rusch reports receiving grants from Genelux, Inc., and Genentech; and other from DaVinci Surgery, Bristol Myers Squibb, and NIH/Coordinating Center for Clinical Trials, outside of the submitted work. Dr. Tsao reports receiving personal fees from Genentech, during the conduct of the study; receiving personal fees from Bristol Myers Squibb, Eli Lilly, Roche, Novartis, Ariad, EMD Serono, Merck, Seattle Genetics, AstraZeneca, Boehringer-Ingelheim, Sellas Life Science, and Takeda; and receiving grants from Millennium, Polaris, Epizyme, and EMD Serono, outside of the submitted work. Dr. Hassan reports receiving other from Bayer AG, TCR2 Therapeutics, and AstraZeneca, outside of the submitted work. The remaining authors declare no conflict of interest.

Address for correspondence: Michele Carbone, MD, PhD, University of Hawaii Cancer Center, 701 Ilalo Street, Honolulu, HI 96816. E-mail: mcarbone@cc.hawaii.edu

© 2022 International Association for the Study of Lung Cancer. Published by Elsevier Inc. This is an open access article under the CC BY-NC-ND license (<http://creativecommons.org/licenses/by-nc-nd/4.0/>).

ISSN: 1556-0864

<https://doi.org/10.1016/j.jtho.2022.03.014>

Emanuela Taioli, PhD,ⁱⁱ Yasutaka Takinishi, MD,^a Mika Tanji, NP,^a Anne S. Tsao, MD,^{jj}
 A. Murat Tuncer, MD,^{kk} Sebastian Walpole, MPhil,^r Andrea Wolf, MD,^{ll}
 Haining Yang, MD, PhD,^a Yoshie Yoshikawa, PhD,^m Alicia Zolondick,^a
 David S. Schrupp, MD, MBA,^t Raffit Hassan, MD^{mm}

^aUniversity of Hawaii Cancer Center, Honolulu, Hawaii

^bDepartment of Cardiothoracic Surgery, New York University Langone Medical Center, New York, New York

^cEskisehir Osmangazi University Lung and Pleural Cancers Research and Clinical Center, Eskisehir, Turkey

^dRutgers Cancer Institute, Rutgers Robert Wood Johnson Medical School, New Brunswick, New Jersey

^eDepartment of Thoracic Oncology, The Netherlands Cancer Institute, Amsterdam, The Netherlands

^fLeiden University Medical Center, Leiden, The Netherlands

^gSurgical Oncology Program, National Cancer Institute, Bethesda, Maryland

^hDivision of Thoracic and Cardiac Surgery, Brigham and Women's Hospital and Harvard Medical School, Boston, Massachusetts

ⁱLeicester Cancer Research Centre, Department of Genetics & Genome Biology, University of Leicester, Leicester, UK

^jUnit of Thoracic Surgery, Azienda Ospedaliera San Camillo Forlanini, Roma, Italy

^kDivision of Hematology, Oncology, and Palliative Care, Carbone Cancer Center and School of Medicine and Public Health, The University of Wisconsin-Madison, Madison, Wisconsin

^lDepartment of Health Sciences, Università del Piemonte Orientale, Novara, Italy

^mDepartment of Genetics, Hyogo College of Medicine, Nishinomiya, Hyogo, Japan

ⁿDepartment of Chest Diseases, Medicana Hospital Kadikoy, Istanbul, Turkey

^oLaboratory of Molecular Oncology, Division of Thoracic Surgery, University Hospital Zürich, Zürich, Switzerland

^pDepartment of Thoracic Surgery, Icahn School of Medicine at Mount Sinai Health System, New York, New York

^qMesothelioma Unit, Azienda Ospedaliera SS Antonio e Biagio e Cesare Arrigo, Alessandria, Italy

^rQJMR Berghofer Medical Research Institute, Brisbane, Queensland, Australia

^sMesothelioma Applied Research Foundation, Washington DC

^tThoracic Surgery Branch, National Cancer Institute, National Institutes of Health, Bethesda, Maryland

^uSection of Hematology/Oncology, University of Chicago, Chicago, Illinois

^vDepartment of Oncology, Loyola University Chicago, Maywood, Illinois

^wDepartment of Pathology, University of Chicago, Chicago, Illinois

^xDivision of Medical Oncology and Precision Cancer Therapeutics, Mayo Clinic, Rochester, Minnesota

^yCenter for Biotechnology, Sbarro Institute for Cancer Research and Molecular Medicine, College of Science and Technology, Temple University, Philadelphia, Pennsylvania

^zDepartment of Clinical Genetics, LUMC, Leiden, The Netherlands

^{aa}Centre for Genomics and Personalised Health, Translational Research Institute, Queensland University of Technology (QUT), Brisbane, Australia

^{bb}Department of Medicine and Surgery, LUM University "Giuseppe DeGennaro," Casamassima, Bari, Italy

^{cc}Department of Surgery, Division of Thoracic Surgery, Toronto General Hospital, Toronto, Ontario, Canada

^{dd}Department of Immunology, Division of Thoracic Surgery, Toronto General Hospital, Toronto, Ontario, Canada

^{ee}Department of Genetics and Immunology, University of the Highlands and Islands, Inverness, Scotland, UK

^{ff}Department of Surgery, Division of General Thoracic Surgery, The Michael E. DeBakey Department of Surgery, Baylor College of Medicine, Houston, Texas

^{gg}National Centre for Asbestos Related Disease, University of Western Australia, School of Medicine and Pharmacology, Nedlands, Western Australia, Australia

^{hh}Department of Surgery, Memorial Sloan Kettering Cancer Center, New York, New York

ⁱⁱInstitute for Translational Epidemiology, Icahn School of Medicine at Mount Sinai Health System, New York, New York

^{jj}Department of Thoracic/Head and Neck Medical Oncology, Division of Cancer Medicine, The University of Texas MD Anderson Cancer Center, Houston, Texas

^{kk}International Prevention Research Institute, Lyon, France

^{ll}New York Mesothelioma Program and Department of Thoracic Surgery, Icahn School of Medicine at Mount Sinai Health System, New York, New York

^{mm}Thoracic and GI Malignancies Branch, Center for Cancer Research, National Cancer Institute, Bethesda, Maryland

Received 15 December 2021; revised 23 March 2022; accepted 31 March 2022

Available online - 21 April 2022

ABSTRACT

The most common malignancies that develop in carriers of *BAP1* germline mutations include diffuse malignant mesothelioma, uveal and cutaneous melanoma, renal cell carcinoma, and less frequently, breast cancer, several types of skin carcinomas, and other tumor types. Mesotheliomas in these patients are significantly less aggressive, and patients

require a multidisciplinary approach that involves genetic counseling, medical genetics, pathology, surgical, medical, and radiation oncology expertise. Some *BAP1* carriers have asymptomatic mesothelioma that can be followed by close clinical observation without apparent adverse outcomes: they may survive many years without therapy. Others may grow aggressively but very often respond to therapy.

Detecting *BAP1* germline mutations has, therefore, substantial medical, social, and economic impact. Close monitoring of these patients and their relatives is expected to result in prolonged life expectancy, improved quality of life, and being cost-effective. The co-authors of this paper are those who have published the vast majority of cases of mesothelioma occurring in patients carrying inactivating germline *BAP1* mutations and who have studied the families affected by the *BAP1* cancer syndrome for many years. This paper reports our experience. It is intended to be a source of information for all physicians who care for patients carrying germline *BAP1* mutations. We discuss the clinical presentation, diagnostic and treatment challenges, and our recommendations of how to best care for these patients and their family members, including the potential economic and psychosocial impact.

© 2022 International Association for the Study of Lung Cancer. Published by Elsevier Inc. This is an open access article under the CC BY-NC-ND license (<http://creativecommons.org/licenses/by-nc-nd/4.0/>).

Keywords: Mesothelioma; BAP1; Cancer genetics; Germline mutations; Tumor predisposition syndromes; Asbestos

Introduction: The BAP1 Cancer Syndrome and Mesothelioma

The discovery that heterozygous germline *BAP1* pathogenic mutations—that is, “null variants”—confer

an increased risk for a variety of cancers has created new opportunities for early detection and therapy of diffuse malignant pleural pericardial and peritoneal mesothelioma, referred to in this manuscript as “mesothelioma.”^{1–3} In the clinically ascertained families, carriers of a heterozygous nonfunctional *BAP1* allele, the lifetime penetrance has approached 100%; approximately one-third of carriers develop two to seven cancers during their lifetime and mesotheliomas are frequent (Fig. 1).^{4–12} Pathogenic germline *BAP1* mutations are autosomal dominant: because family members have a 50% chance to inherit the same mutation, they should be tested, as they will benefit from screening and early detection. Pathogenic germline mutations, mostly *BAP1* mutations, were found in approximately 9.7% to 12% of all patients with mesothelioma; they are much more prevalent among young patients and in those with a family history of mesothelioma.^{13–17} Specifically, pathogenic germline mutations are found in more than 50% of mesotheliomas developing in patients 50 years old or younger and in almost all patients with mesothelioma with a family history of mesothelioma and/or uveal melanoma (UVM) or clear cell renal cell carcinoma (ccRCC).¹⁸ In *BAP1* mutation carriers, pleural and peritoneal mesotheliomas may develop synchronously or several years apart, likely representing different primaries developing in a background of diffuse atypical mesothelial hyperplasia and mesothelioma in situ, lesions typically found in the pleura and peritoneum of carriers of pathogenic mutations.^{2,3} Affected individuals

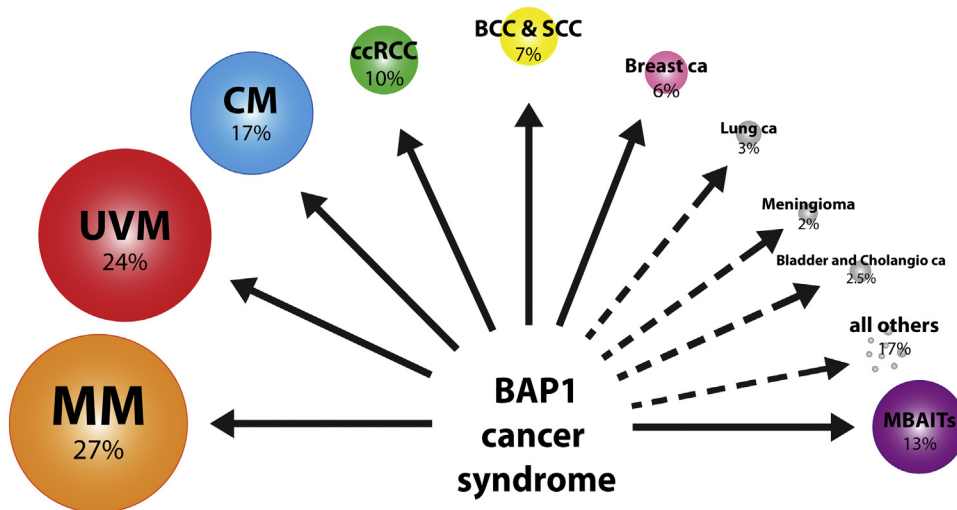


Figure 1. Incidence of different cancer types in carriers of germline *BAP1* mutations. Compiled from 97 papers from PubMed from 2011 to January of 2022, including a total of 689 individuals (309 females, 268 males, and 112 unknown), in which 553 developed cancer: 27% had 2 to 7 tumor types. Percentage of tumors indicated in the figure represents the percentage of carriers of germline *BAP1* mutations who develop that specific tumor type. Age range: 12 years old with meningioma, 84 years old with mesothelioma. Median age of mesothelioma diagnosis was 55 years old. MM, malignant mesothelioma; UVM, uveal melanoma; CM, cutaneous melanoma; ccRCC, clear cell renal cell carcinoma; BCC, basal cell carcinoma; SCC, squamous cell carcinoma; ca, cancer; MBAITs, melanocytic BAP1-mutated atypical intradermal tumors.

develop cancer approximately 20 years earlier than observed when the same malignancies develop sporadically,¹⁸⁻²⁰ and they also develop benign melanocytic intradermal tumors.^{7,8,21-23}

Men and women exposed to asbestos have the same risk of developing mesothelioma.²⁴ Because men are more likely to work in trades in which asbestos exposure occurs, sporadic (not genetically related) pleural mesothelioma occurs with a male/female ratio of approximately 5:1 and 2:1 in peritoneal mesotheliomas that are less frequently associated with asbestos exposure.³ Accordingly, the overall ratio of pleural to peritoneal mesothelioma is 5:1.³ In contrast, in *BAP1* mutation carriers, pleural and peritoneal mesotheliomas occur with a male/female ratio of 1:1 and with a pleural:peritoneal ratio of 1:1, as they often occur in patients with no or minimal asbestos exposure.^{2,3,13-15,25}

Cancer screening in *BAP1* mutation carriers should start early in life. The earliest cancers were found in two 8-year-old children who developed cutaneous melanoma (N.K.H., unpublished observations). In the United States, the youngest *BAP1* mutation carrier who developed mesothelioma was aged 28 years (peritoneal malignant mesothelioma) and the oldest at 84 years (M.C. et al. unpublished observations). In a cohort of 72 Dutch germline *BAP1* mutation carriers, six developed pleural and two peritoneal mesothelioma. Among their genetically untested relatives, five developed pleural and four peritoneal mesothelioma, with age range of 39 to 71 years.²⁶

Some malignancies in germline *BAP1* mutation carriers, mesotheliomas in particular, are much less aggressive.^{2,19} Median survival for mesothelioma in these patients is approximately 5 to 7 years from diagnosis with 26% of patients surviving 10 or more years—some are alive and well 20 years after diagnosis and therapy (Ref. 18 and M.C. unpublished observations); hopefully, some of them will not die of it. This is significantly different than the 6 to 24 months median survival for sporadic—that is, not genetically related—mesothelioma, depending on histology.³ Two studies reported a 5 to 7 years of median survival in both pleural and peritoneal mesotheliomas^{18,19}; one study found an improved median survival of 7.9 years for pleural but not for peritoneal mesothelioma.¹⁴ Resolving these discrepancies will require evaluation of more patients. At present, we do not know why mesotheliomas in carriers of germline *BAP1* mutations are less aggressive.

Gene mutations are not equivalent. Pathogenic mutations in tumor suppressor genes, such *BAP1* and *TP53*, that simultaneously impair (1) DNA repair and transcription, (2) mechanisms regulating cell death, and (3) cellular metabolism, are much more potent cancer inducers than tumor suppressors that alter only one of

these activities.⁴ Heterozygous *BAP1* and *p53* mutations cause cancer, and often multiple cancers,^{4,8-10,27,28} in approximately 100% of affected carriers, evidence of haploinsufficiency; thus, the term “cancer syndrome” reflects the medical conditions they cause.⁴ For pathogenic mutations that increase the risk of cancer only in a fraction of mutation carriers, “tumor predisposition syndrome” seems more appropriate.⁴

The interplay between *BAP1* mutations and carcinogens remains incompletely defined. In vitro and in vivo studies indicate that germline mutations of *BAP1* and of some DNA repair and tumor suppressor genes increase sensitivity to asbestos, ionizing radiation, and ultraviolet light.^{4,29-32} This evidence, however, comes from experiments in tissue culture and in mice where the exposure doses are limited in time and significantly higher than in humans. Currently, there is no evidence that ionizing radiation from typical exposures, such as airplane travel or medical imaging, increases cancer risk in humans with *BAP1* germline mutations.

Clinicians are often unaware of patients carrying germline *BAP1* mutations, and most do not know the clues to suspect or investigate carriers. Moreover, many clinicians are unaware of the unique clinical characteristics of malignancies arising in *BAP1* mutation carriers, and the needs of these patients and their family members. Thus, many patients and their affected family members may not receive ideal therapies and the necessary follow-up. This may negatively affect their quality of life and survival. In this manuscript, we provide information based on our collective experience and the published literatures, pertaining to surveillance of healthy individuals and patients with cancer carrying germline *BAP1* pathogenic mutations, and regarding the management of mesotheliomas arising in these individuals.^{3,6,33,34}

This paper focuses on *BAP1*; however, the concepts discussed may apply more widely to individuals carrying other pathogenic germline mutations that cause other tumor predisposition syndrome/cancer syndromes, as in these individuals mesothelioma may occasionally develop and may also be associated with prolonged survival.^{4,13,14,18,32}

Clinical Examples of Patients Carrying *BAP1* Germline Mutations and Challenges in Their Clinical Management

To explain the challenges clinicians face when dealing with mesothelioma in carriers of germline *BAP1* mutations and in advising family members who inherited these same mutations, we will review three representative examples. The selection of these patients was based on the collective experience of the co-authors who

together have diagnosed/treated most of the published cases of mesotheliomas developing in carriers of germline BAP1 mutations. In our experience, these three cases represent well the diagnostic and therapeutic challenges in this particular group of patients, who are usually young, do not have evidence of asbestos exposure, seem to respond to therapy, and often have an excellent survival. These three patients are from the same family, carry the same BAP1 mutation, and have no history, radiologic or histologic evidence of asbestos exposure (Fig. 2). Written informed consent was received from all patients. Collection and use of patient information and samples were in accordance with the Declaration of Helsinki (1995) and the World Medical Association (2013 revision), approved by the University of Hawaii (institutional review board number CHS14406). After a brief synopsis of the patients' situation, related issues in the context of hereditary BAP1 cancer syndrome are discussed.

Patient 1 (I-01, Sister of Proband)

A 43-year-old woman known to carry a BAP1 germline mutation presented in March 2016 with recurrent abdominal pain. Laparoscopy result revealed multiple peritoneal nodules diagnosed as malignant mesothelioma, epithelioid type with tubulopapillary and trabecular architecture. The malignant cells seemed bland and well-differentiated, and they infiltrated the surrounding tissues. This patient was treated with cytoreductive

surgery, hyperthermic intraperitoneal chemotherapy, and adjuvant cisplatin/pemetrexed therapy.³⁵ This therapy is associated with major complications in approximately 40% of patients and a median of 12 days of hospitalization. The 60 days' mortality can be as high as 6%. As of January 2022, almost 6 years post-diagnosis and therapy, she remains tumor free with an excellent quality of life. This patient is clearly doing exceptionally well. Now, let us consider her sister (Figs. 2 and 3).

Patient 2 (I-03, Sister of Proband)

A 46-year-old female with history of stage IIB breast cancer, ER/PR positive and HER2 negative. In 2015, she underwent elective laparoscopic oophorectomy for ovarian ablation in light of her ER-expressing breast cancer, which revealed multiple peritoneal nodules. Biopsy and pathologic examination of these nodules revealed malignant mesothelioma, epithelioid type with tubulopapillary architecture: the same histology as found in her sister. This patient, however, elected not to receive any further treatment. Her mesothelioma did not progress: as of January 2022, 6 years postdiagnosis, she is asymptomatic and lives a normal life, and she remains on adjuvant aromatase inhibitor for her breast cancer (Figs. 2 and 3).

This sister initially manifested a less frequent malignancy for this inherited cancer syndrome, breast cancer (Fig. 1). Only through an incidental finding on therapeutic laparoscopy was she diagnosed with

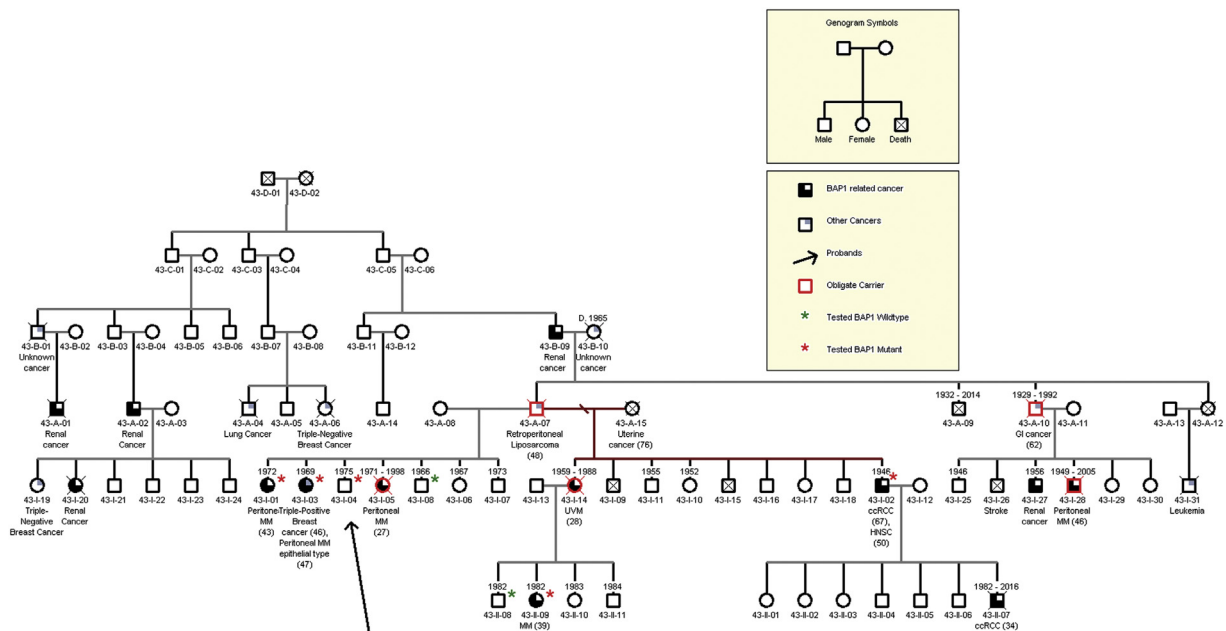


Figure 2. Pedigree of the P-family. Date of birth and date of death are indicated when known. The diagnoses are based on review of medical records and information from treating physicians; the diagnoses of mesothelioma were further verified by the review of the histology and of the immunostains. Information about some of the patients in this pedigree can be found in Kittaneh and Berkelhammer.³⁵ MM, malignant mesothelioma, ccRCC, clear cell renal cell carcinoma, UVM, uveal melanoma.

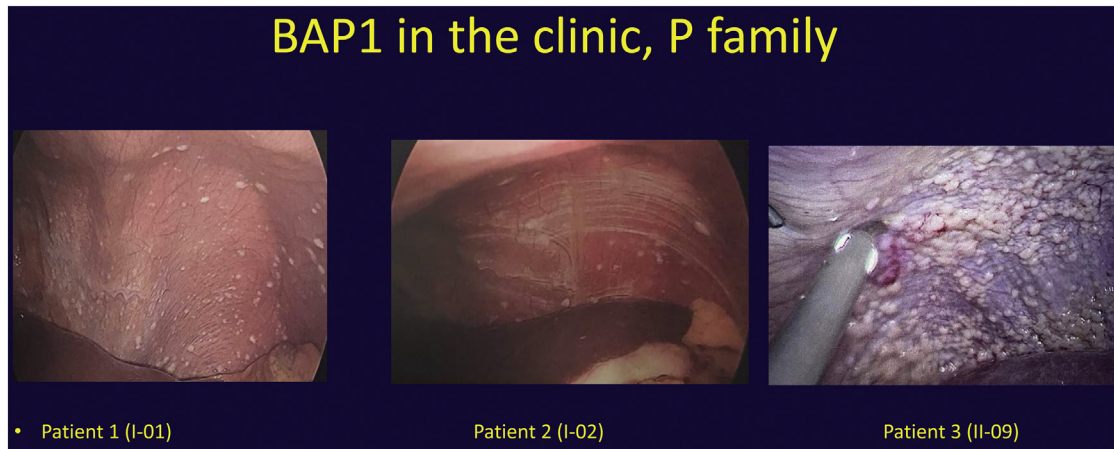


Figure 3. Early mesothelioma nodules in carriers of germline *BAP1* mutations from the P-family. These nodules were identified during laparoscopy (patients 1 and 2) and VATS (patient 3, see histology in [Supplementary Figure 1](#)). These nodules are common in carriers of germline *BAP1* mutations, and they often have an indolent biological behavior for several years. VATS, video-assisted thoracoscopy.

mesothelioma, with a low peritoneal carcinomatosis index. In her case, despite no therapy, her outcome from her mesothelioma at 6 years is identical to that of her sister who underwent extensive and potentially toxic therapies. The obvious issue here is the inability to advise patients with *BAP1* germline mutations as to the natural history of their mesothelioma so that they can make informed decisions regarding watchful waiting versus aggressive therapy. Nevertheless, in these same patients, other malignancies that are frequent in carriers of *BAP1* germline mutations, such as UVM, cutaneous melanoma, and ccRCC, can instead be aggressive, and they require early detection and prompt ablation/removal, measures that can be life-saving. The situation with the third relative in the family is a little different.

Patient 3 (II-09 Half-Niece of Proband)

A 39-year-old woman with an 8-year history of recurrent “benign reactive,” right pleural effusion. In December 2020, she underwent video-assisted thoracoscopy (VATS) revealing multiple pleural nodules that were diagnosed as diffuse malignant mesothelioma, epithelioid type, with trabecular architecture. After debating whether and how to treat her, it was decided to treat her with 6 cycles of cisplatin/pemetrexed. Her follow-up imaging result revealed a partial response with resolution of her pleural effusion ([Figs. 2 and 3](#) and [Supplementary Fig. 1](#)).

This is a young woman, with minimal disease, with the options of watchful waiting, pleurectomy decortication (risk of death 1%–2%, morbidity 20%, hospitalization 7 d), or first-line chemotherapy for which, for patients with sporadic mesothelioma, median overall survival is 12 to 15 months and there is 1% risk of death

and 5% chance of complications. She presented with surgically resectable disease, and probably she had mesothelioma for 8 years, when she started developing pleural effusions. She waited 8 years to have a thoracoscopy and biopsy. Would it have made any difference if treatment had been administered 8 years prior?

These examples reveal the complexity of this cancer syndrome, especially for patients diagnosed with having mesothelioma. Although most patients with mesothelioma carrying germline mutations have significantly prolonged survival compared with sporadic—that is, non-genetically related—mesotheliomas, there are no biomarkers to identify which patients will have a long-term survival and which may benefit from immediate therapy with attendant potential morbidity. Indeed, there are no models that accurately predict who is going to respond to therapy either in germline—although most of them do—or sporadic mesotheliomas. If a mesothelioma patient with a germline mutation decides to have surveillance only, there is no consensus on how to follow these patients, either by frequency or mode (computed tomography [CT], magnetic resonance imaging [MRI]) of follow-up. Moreover, present data do not indicate that specific *BAP1* mutations influence the type(s) of cancer that will develop or the aggressiveness of the malignancies. To address these issues, the U.S. National Cancer Institute (NCI) has opened two clinical trials to prospectively study frequency of mesotheliomas and other cancers in individuals with germline *BAP1* mutations (see subsequent discussion).

Germline *BAP1* Mutations

To date, with one exception,³⁶ all pathogenic *BAP1* mutations resulted in loss of *BAP1* nuclear localization,

where BAP1 regulates DNA repair, chromatin assembling, and transcription.² The nuclear localization signal is located at the carboxyterminus of the BAP1 protein; therefore, all truncating mutations are pathogenic because the nuclear localization signal is lost^{1,18,20} and the truncated BAP1 protein remains in the cytoplasm where it is degraded to amyloid.³⁷ Accordingly, most families affected by the BAP1 cancer syndrome carry truncating mutations (Fig. 4). Determining the pathogenicity of nonsynonymous BAP1 variants is more challenging; however, their location is helpful. In fact, to translocate from the cytoplasm to the nucleus, BAP1 has to deubiquitylate itself.³⁸ Therefore, nonsynonymous mutations in the UCH domain (the deubiquitylating BAP1 domain) may also be pathogenic when they cause loss of the deubiquitylating activity (this can be tested in vitro²⁹). Mutations in other portions of the protein are less frequently pathogenic (Fig. 4). Because the BAP1 cancer syndrome is a novel medical entity, CLINVAR, and other tools available on the internet to predict the impact of a given mutation, are often not helpful to assess whether a variant is or is not pathogenic, as historical information to make such predictions is rarely available.

Given the overall rarity of the most frequent tumor types found in the BAP1 cancer syndrome in the general population (e.g., mesothelioma, UVM, ccRCC, and melanocytic BAP1-mutated atypical intradermal tumors, Fig. 1), personal and family histories are very powerful, allowing a clinical diagnosis of BAP1 cancer syndrome that can be verified by genetic testing. Furthermore, if the novel BAP1 variant segregates in a patient and/or family members with tumors highly specific to the BAP1 cancer syndrome, this provides strong evidence for pathogenicity of the variant. For example, because there are approximately 3200 mesotheliomas/yr in the U.S. population, in a U.S. family with two male and two female siblings, the probability of one male and one female developing mesothelioma by chance is 2.8E-10 (0.0000000028% or 0.00000028%). Efforts to collate all BAP1 variants from cases around the world will make these interpretations easier over time. We recommend that, whenever possible, the decision of whether a given BAP1 mutation is pathogenic should be integrated and supported by a family history of multiple cancers, in particular those most frequently associated with the BAP1 cancer syndrome.

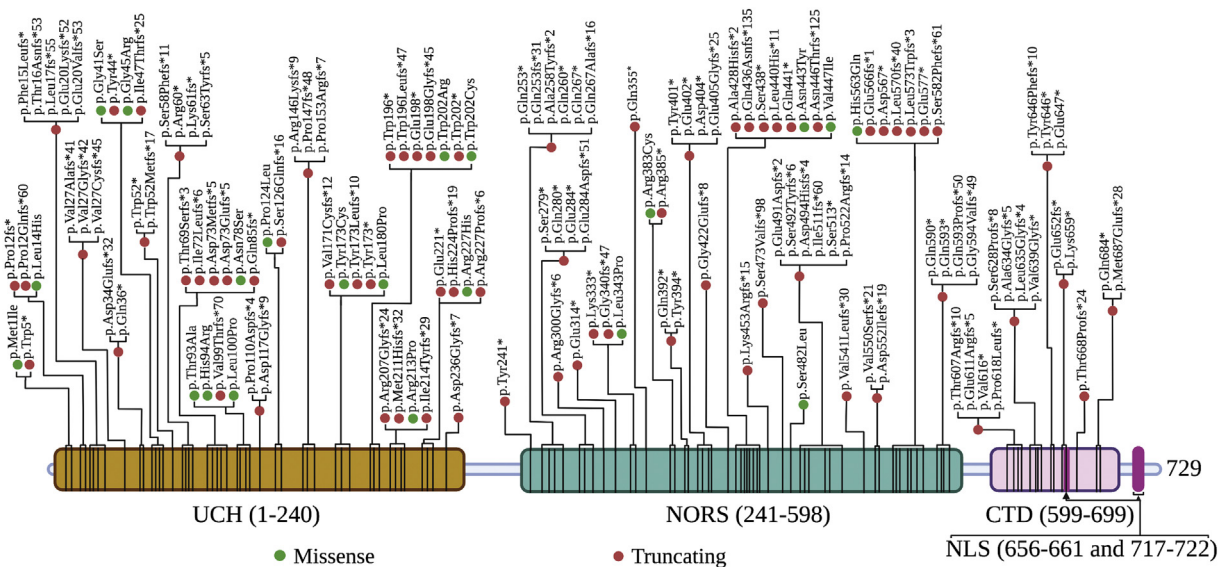


Figure 4. Schematic representation of the BAP1 protein with pathogenic and likely pathogenic variants reported as of February 2022. The previously reported, and some unreported (M.C. et al, unpublished), BAP1 variants were classified according to the ACMG model. The deubiquitylating enzyme, BAP1, contains a catalytically active ubiquitin carboxyterminal hydrolase domain (UCH 1-240), an unstructured nonorganized region (NORS 241-598), a C-terminal domain (CTD 599-699), and a nuclear localization signal (NLS 656-661 and 717-722). The locations of pathogenic and likely pathogenic variants are found on the BAP1 protein in their associated domains. Missense mutations are marked with a green dot, and truncating variants are marked with a red dot. Graphical representation does not include large germline deletions found in four families, including two families affected by multiple malignancies carrying a whole heterozygous BAP1 gene deletion (Walpole et al.⁶ and MC et al., unpublished observations), variants lacking protein structure prediction, VUS (as classified using the ACMG model), benign variants, and others that did not meet the cutoff criteria for ACMG scoring owing to high population frequency or lack of critical information. For additional information of the variants, see [Supplementary Table 1](#). Fs, frame shift; *, stop codon; splice, aberrant splicing. ACMG, American College of Medical Genetics and Genomics. VUS, variants of unknown significance. Created with Biorender.com.

We use the American College of Medical Genetics and Genomics (ACMG) guidelines to identify *BAP1* mutations as pathogenic, likely pathogenic, variants of unknown significance (VUS), or benign and likely benign.³⁹ Figure 4 illustrates the locations of all pathogenic *BAP1* mutations that we identified up to January 2022 according to the ACMG guidelines in a total of 234 families and 510 subjects from the United States, Europe, Australia, and Asia based on the previous publications and our study cohorts. The complementary Supplementary Table 1 reports these pathogenic variants and the VUS that were identified based on the ACMG guidelines. Supplementary Table 1 also reports the cancer types associated with these mutations, their Combined Annotation Dependent Depletion (CADD) score and additional details. We anticipate that most VUS with a CADD score more than 18 found in Supplementary Table 1 will be identified as pathogenic in the coming years as more data accumulate. Of note, to date, all *BAP1* germline mutations with a CADD score of 18 or higher have been found to be pathogenic.

Genetic Testing

Genetic testing for mesothelioma has been increasingly offered in university hospitals in the United States and is also offered by several private companies. Clinical genetic testing panels for hereditary cancer frequently include approximately 40 to 300 genes, including *BAP1*, and allow simultaneous detection of multiple germline mutations that have been associated with an increased risk of cancer, including mesothelioma.^{13,14,18} When pathogenic germline mutations are detected, family members should also be tested, as they may benefit from screening and early detection (see subsequent discussion). It is generally agreed that to decrease ascertainment bias, all first-degree relatives should be genotyped. Turnaround time of these tests may vary from one to several weeks depending on the hospital setting or commercial test used. For example, all patients with mesothelioma presenting at The University of Chicago Mesothelioma Clinic since April 2016 have been approached for consent to research-based germline genetic testing.¹³ Through January 2021, 439 of 462 (93%) patients consented. Of these, 431 (98%) wished to hear actionable cancer risk findings if any were identified and 46 of 439 (10%) had an actionable finding. This positive genetic testing proportion is similar to the proportions found in other patients with multiple other cancer types, such as breast (6%), pancreas (4%–7%), prostate (5%–12%), and ovarian (18%) carcinomas in which guidelines recommend history based or, increasingly, universal germline genetic testing.^{13,16,40–43} Recontact and disclosure were successful for 28 of 46 (61%) with

actionable findings, including 25 patients and three designated family members for patients deceased before disclosure. Nevertheless, of these, only seven (25%) wished to confirm their results clinically and allow the finding to be part of their medical records. Major themes emerging from disclosure included lack of exploration of family history of cancer (“I thought this cancer was caused by asbestos”) and major concerns regarding potential implications on current or future asbestos litigation, limiting acceptance of clinical testing.¹³

Somatic *BAP1* Mutations

Carriers of heterozygous germline *BAP1* mutations prevalently develop mesothelioma, UVM, cutaneous melanoma, and ccRCC, and their tumor cells carry biallelic *BAP1* mutations^{2,3} (Fig. 1). Underscoring the pathogenic role of *BAP1* loss in these malignancies, somatic *BAP1* mutations are much more common in these same tumor types than in other malignancies.^{2,3} More than 60% of sporadic mesotheliomas and 100% of those developing in carriers of germline *BAP1* mutations have biallelic inactivation of *BAP1* in their tumor cells.^{1,2,44} Nevertheless, the significant improved survival of patients with mesothelioma in carriers of germline *BAP1* mutations is not observed in patients with mesothelioma carrying somatic biallelic *BAP1* mutations: this suggests that heterozygous germline *BAP1* mutations influence the microenvironment, including possibly the immune response, rendering the host more resistant to mesothelioma growth, a hypothesis that is being investigated with support of NCI R01 funding.

Next-generation sequencing approaches to find nucleotide-level mutations, integrated with multiplex ligation-dependent probe amplification or high-density CGH arrays to reveal minute and large chromosomal *BAP1* deletions, identify most *BAP1* mutations, including germline heterozygous *BAP1* mutations.^{44,45} *BAP1* immunohistochemistry (IHC) nuclear loss is very sensitive to detect *BAP1* biallelic inactivation because approximately 100% of pathogenic *BAP1* mutations are either truncating mutations causing deletion of the nuclear translocation signal located at the carboxyterminus of the *BAP1* protein or these mutations impair *BAP1* deubiquitylating activity which is required for *BAP1* protein nuclear translocation³⁸ (Fig. 4). Of note, cells with heterozygous *BAP1* mutations contain one normal allele that produces nuclear staining. Therefore, IHC cannot be used to identify germline *BAP1* mutations. *BAP1* IHC is instead very helpful in the differential diagnosis of mesothelioma. Benign mesothelial cells, including benign atypical mesothelial hyperplasia, reactive mesothelial cells in chronic pleuritis and in various

types of benign peritoneal inflammatory processes that cause adhesions and cystic formations which at times can be difficult to distinguish from malignant mesothelioma, always retain *BAP1* nuclear staining (Fig. 5). Instead, loss of *BAP1* nuclear staining is evidence of malignancy.^{44,46,47} Moreover, loss of *BAP1* nuclear staining is helpful as a supportive evidence to diagnose mesothelioma from other malignancies.^{44,46-48} Representative examples to help pathologists interpret *BAP1* IHC are revealed (Fig. 5).

Screening and Surveillance of *BAP1* Mutation Carriers and Cost/Benefit Considerations

Primary surveillance for carriers of pathogenic germline *BAP1* mutations is critical as it can be life-saving. The main issues are when to start testing; how to do the testing in the least invasive fashion to avoid excess radiation or invasive biopsies; and how to harmonize different screening protocols for different cancers, including UVM and cutaneous melanoma, mesothelioma (pleural, pericardial, or peritoneal), and other cavitory malignancies, in particular the quite frequent ccRCC (Fig. 1). In 2016, a consensus report in *JTO* proposed screening for *BAP1* germline mutations in families with high-risk features, such as three or more cases of any of the following cancers within two generations: malignant mesothelioma, UVM, ccRCC, and cholangiocarcinoma. Moreover, recommendations for *BAP1* germline mutations carriers and their affected relatives included the following: (1) annual dermatologic screening for early detection of melanoma at age 18 years or older; (2) annual eye examination/ophthalmoscopy for UVM at age 18 years or older; and (3) skin and eye examinations every 6 months after age of 30 years when the frequency of cancer among carriers of germline *BAP1* mutations starts to increase, with supportive genetic counseling.³³ In 2016, Pilarski et al.,³⁴ reviewed this issue and suggested that screening for UVM should start when carriers are 11 years old and screening for mesothelioma and ccRCC at age 30 years. There are other publications discussing recommendations for surveillance,^{6,18,26,34,49-51} and these were reviewed.⁶ The Dutch Oncogenetics Society recommends yearly surveillance for skin and UVM starting at age 16 years and yearly MRI imaging to detect mesothelioma and ccRCC starting at age 30 years in a research setting.²⁶ In 2021, the Australia NSW Cancer Institute government eviQ website created a *BAP1* cancer risk management page with a proposed surveillance plan.⁵¹ Presently, based on our collective experience, we recommend adopting the guidelines regarding age at which to start screening and the frequency of screening as

per the ongoing NCI clinical study (NCT03830229) described in detail in Table 1. These protocol-specific screenings were based on the available scientific literature regarding the age of onset of the different tumor types in individuals with pathogenic germline mutations in *BAP1*. The radiologic imaging using MRI starts at age 30 years except for MRI of the brain that starts at age 18 years given recent reports of meningiomas in children and young adults and the fact that meningiomas in these patients are more aggressive.^{52,53} A related trial (NCT04431024) that is focused primarily on mesothelioma detection uses CT screening beginning at age 30 years (see subsequent discussion).

Screening and follow-up for early cancer detection should be cost-effective and improve survival. In 2021, Walpole et al.⁵⁴ created a Markov microsimulation health state transition model of *BAP1* germline carriers to predict whether active surveillance for the four most common malignancies (mesothelioma, UVM, cutaneous melanoma, and ccRCC) influences survival and reduced costs. They found that surveillance of *BAP1* carriers was associated with an increased survival of 4.9 years at an additional cost of US \$6197 for the health care system, including surveillance costs (US \$1265 per life-year gained). The nonsurveillance arm had more cancers diagnosed at a late stage (62.8% versus 10.7%) and a higher rate of *BAP1*-related deaths (50.2% versus 35.4%; 29.5% increase). The model was cost-effective under all sensitivity analyses. A robustness analysis estimated that 99.86% of 100-sample iterations were cost-effective, and 19.67% were cost-saving. These findings support the inclusion of a surveillance regimen for *BAP1* germline mutation carriers in the health care system, as this model suggests that it will improve survival and be cost-effective.

Screening for Mesothelioma

No clear consensus for mesothelioma surveillance exists, a limitation that the ongoing clinical trials at the NCI for patients with mesothelioma and their relatives carrying germline *BAP1* mutations hopes to address; see subsequent discussion. Imaging by CT^{33,35,34,55-58} and ultrasound⁵⁹ has not been proven useful. Among noninvasive blood-based biomarkers, mesothelin (also known as soluble mesothelin-related peptides) has been extensively studied. Although there is statistically significant evidence that soluble mesothelin-related peptides can be elevated in the year before diagnosis,⁶⁰ its sensitivity is too low for early detection.^{61,62} Other biomarkers include high-mobility group box 1, fibulin-3, calretinin, and osteopontin. Studies revealed significantly higher total and acetylated high-mobility group box 1 blood levels in patients with mesothelioma and in asbestos-exposed patients, compared with healthy controls, but this test relies

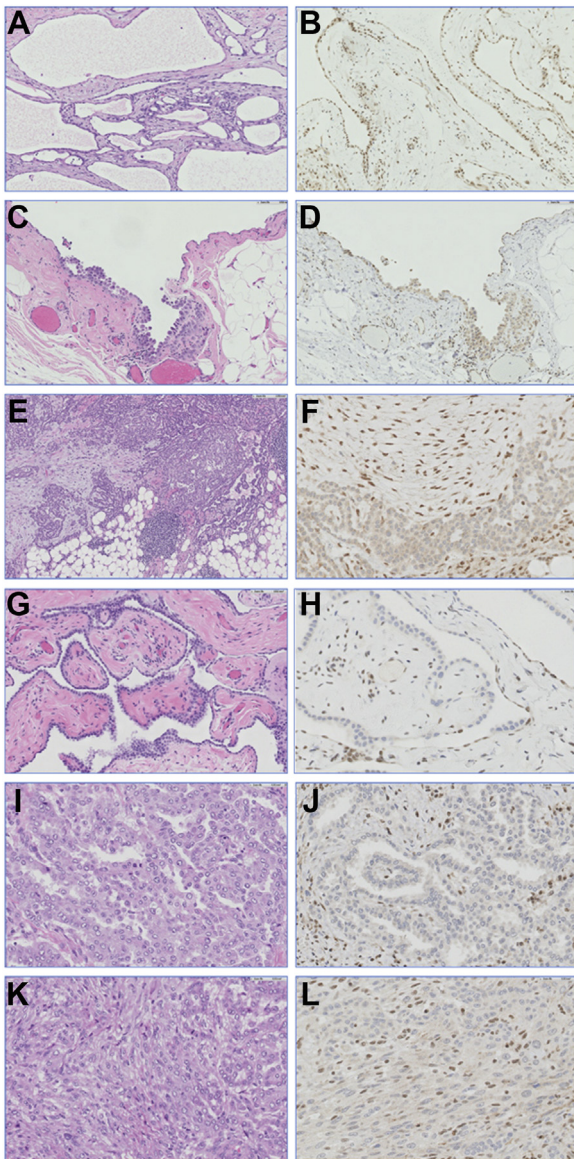


Figure 5. BAP1 immunostaining. (A, B) Benign mesothelial hyperplasia. (A) Cystic mesothelial inclusion in a patient who had previous surgery for ectopic pregnancy and developed peritoneal adhesions (H/E stain). (B) The single layer of mesothelial cells revealing nuclear BAP1 staining, an evidence that this is a benign lesion. (C-F) Peritoneal epithelioid mesothelioma. (C) Single layer of benign mesothelial cells forming a nodular area known as “in situ” mesothelioma (H/E stain). (D) BAP1 nuclear expression is retained in normal and lost in malignant cells (nodule) supporting a diagnosis of mesothelioma in situ (preinvasive malignant lesion). This patient had another focus of frankly invasive mesothelioma whose cells had lost BAP1 nuclear expression. (E, F) Malignant peritoneal epithelioid mesothelioma (E, H/E staining) with BAP1 loss and adjacent fibrosis with benign spindle-reactive mesothelial cells and fibroblasts in which nuclear BAP1 staining is retained (F). (G, H) Pleural biopsy. Same patient as E and F who developed a year later mesothelioma in the pleura. (G) H/E stain reveals a microcystic papillary pleural mesothelioma that seems to be a very early lesion (new primary seems more likely than spread from previous peritoneal mesothelioma). (H) BAP1 immunostaining reveals

on Western blotting, which is not suitable for screening, whereas validation of mass spectrometry and enzyme-linked immunosorbent assay has proved difficult.⁶³ Fibulin-3, encoded by the SPP1 gene, is an extracellular glycoprotein expressed in most tissues in the early embryonic stage, and it is selectively elevated in patients with mesothelioma. Ongoing studies elucidated possible reasons for inconsistent readings depending on the tube that the blood is harvested owing to FBLN3 proteolysis.⁶⁰ Despite excellent discrimination between patients exposed to asbestos and patients with mesothelioma, osteopontin specificity limits its usefulness for mesothelioma screening.⁶⁴ Calretinin is expressed in mesothelial cells and mesothelioma.⁶⁵ Blood calretinin levels were able to prediagnose mesothelioma in an asbestos-exposed population with an area under the curve of 0.77 one to 15 months prior definitive diagnosis.⁶⁶ Novel methods being explored for screening include breath analyses,^{67,68} circulating tumor DNA, and microRNAs.⁶⁰

Clinical Trials for Patients With Mesothelioma and Their Relatives Carrying *BAP1* Germline Mutations

In the United States, the NCI has two open clinical trials specifically tailored for these patients and their relatives. These trials offer eligible individuals free cancer prevention and cancer therapy in one of the most advanced medical centers in the United States. Moreover, because, as briefly summarized previously, there are no proven effective screening tests for mesothelioma, one of the main objectives of these trials is the identification of a reliable screening methodology.

The first trial—Long Term Follow-up of Mesothelioma Patients With Germline Mutations in *BAP1* and Other Genes⁶⁹ ([ClinicalTrials.gov](https://clinicaltrials.gov/ct2/show/study/NCT03830229) NCT03830229)—is seeking to noninvasively detect malignancies arising in these individuals using periodic MRI scans and breast, skin, and ocular examination. The primary objective is to study the natural history of patients and their family members with germline mutations involving *BAP1* and other DNA repair genes. The secondary objective is to define the risk of developing mesothelioma and other cancers in this cohort. For eligible patients, see [Table 1](#).

normal mesothelium with retained BAP1 next to malignant mesothelium with BAP1 loss. (I-L) Malignant biphasic pleural mesothelioma, epithelioid component (I, J), sarcomatoid component (K, L). There is BAP1 nuclear loss in both epithelioid and sarcomatoid components, evidence that both round and spindle cells are malignant. Note that BAP1 is retained in the nuclei of background reactive benign mesothelial spindle cells; the latter can be distinguished by the malignant cells because of their smaller size and bland nuclear features. H/E, hematoxylin and eosin.

Table 1. NCI Screening Protocol for Individuals With Pathogenic Germline Mutations in the *BAP1* Gene (NCT03830229)

Eligible Participants (Age \geq 2 yr)	Evaluation of Germline Mutations	Baseline Screening of Individuals With Germline <i>BAP1</i> Mutations (Age at Screening)	Surveillance Screening of Individuals With Germline <i>BAP1</i> Mutations (Frequency)
Cohort 1: Individuals with mesothelioma carrying pathogenic germline mutations in <i>BAP1</i> or other DNA repair/cancer predisposition genes	Genetic counseling Saliva, cheek swab, or blood for germline genetic testing	Ophthalmology evaluation (\geq 2 yr) Dermatology evaluation (\geq 2 yr) MRI: Chest, abdomen, and pelvis (\geq 30 yr) MRI: Brain (\geq 18 yr) MRI: Breast (\geq 30 yr) Mammogram for women (\geq 40 yr)	Ophthalmology evaluation (annual) Dermatology evaluation (annual) MRI: Chest, abdomen, pelvis, (every other year) MRI: Brain (every other year) MRI: Breast (every other year) Mammogram for women (annual)
Cohort 2: First- and second-degree relatives of cohort 1 and individuals without mesothelioma carrying germline mutations in <i>BAP1</i> or other DNA repair/cancer predisposition			

MRI, magnetic resonance imaging; NCI, National Cancer Institute.

BAP1 genetic testing is recommended in children of carriers of *BAP1* mutations when they are 2 years old, and any affected children can be enrolled in the NCI trial for early cancer detection. This young age seems justified by the occurrence of melanomas and meningiomas in children carrying *BAP1* germline mutations. Such early detection efforts are consistent with recommended screening procedures for individuals with Li-Fraumeni syndrome, which also has approximately 100% cancer penetrance.⁷⁰

A parallel complementary NCI surgical trial⁷¹ (ClinicalTrials.gov NCT04431024) seeks to (1) determine the incidence and prevalence of subclinical mesotheliomas, (2) define the natural history of these cancers in individuals with *BAP1* CPS, and (3) develop novel treatment strategies for these neoplasms. This protocol is evaluating the potential of photon-counting CT imaging together with serial analysis of cell-free DNA and periodic, thoracoscopic, and laparoscopic assessment of the pleura and peritoneum. It is anticipated that this longitudinal evaluation will identify additional cancers (Fig. 1) in patients with the *BAP1* cancer syndrome. Individuals between ages 30 and 40 years will undergo photon-counting CT and analysis of cell-free DNA every 2 years and yearly in more than 40 years of age. Uniportal VATS and laparoscopy will be performed every 3 years for individuals more than 33 years old. The trial is expected to accrue 800 participants in 10 years.

As currently designed, the NCI surgical *BAP1* protocol calls for thoracoscopic surgery (VATS) and laparoscopy every 3 years after initial VATS and laparoscopic assessment performed at the time of enrollment for patients more than age 33 years or at age 33 years for patients enrolled at an earlier age. An objective scoring system has been implemented for interpretation of

imaging studies and intraoperative findings. Because patients serve as their own controls, the intent is to better characterize the range of tumor biology found with *BAP1*-associated versus non-*BAP1*-associated pleural and peritoneal mesotheliomas.⁷² Furthermore, the trial will study the utility and accuracy of cross-sectional imaging, circulating tumor DNA, in addition to proactive minimally invasive surveillance in patients with germline *BAP1* mutations at risk of developing mesothelioma. Patients in whom early stage mesotheliomas are detected may be eligible for clinical protocols currently under development using agents targeting epigenetic drivers in an attempt to induce regressions or to prevent/delay progression of these neoplasms to life-threatening conditions.

Even when performed in centers of excellence, thoracotomies, laparotomies, and cytoreductive surgeries cannot be performed free of potential morbidity and mortality.⁷³ Are these procedures indicated in subclinical disease? If so, when? As we gain experience with the natural history and relative lethalties of *BAP1*-associated mesotheliomas, we must address the following questions: (1) Are current standard-of-care procedures for pleural and peritoneal mesotheliomas indicated in patients with subclinical disease? If so, when? (2) Does high risk of mesothelioma ever warrant prophylactic VATS parietal pleurectomies—something already considered for children exposed to high levels of crocidolite asbestos?⁷⁴ (3) Can we evaluate novel targeted therapies in patients with subclinical disease without losing the potential for cure by surgery? (4) Given difficulties with implementing screening programs for more common malignancies,^{75,76} do potential benefits justify the intensity and psychological burdens of surveillance in individuals affected by the *BAP1* cancer syndrome?

The two NCI clinical trials should help to address these questions. The information derived from these protocols should accelerate the development of more efficacious regimens for the treatment and possible prevention of mesothelioma in carriers of *BAP1* and other pathogenic germline mutations. Moreover, the ongoing protocols at the NCI will verify the hypothesis that several years before an invasive mesothelioma develops, germline *BAP1* mutation carriers may already have developed multiple polyclonal early mesothelial nodules⁷⁷ that, similar to those found in [Figure 3](#) and [Supplementary Figure 1](#), meet the criteria to diagnose mesothelioma (“subclinical mesothelioma”). Physicians need to be aware that when these minimally infiltrating pleural nodules are detected in carriers of germline *BAP1* mutations, they may remain indolent for years. Eventually, these or other nodules may invade and cause symptoms. Moreover, it is anticipated that *BAP1* mutation carriers may be unusually susceptible to radiation-induced cancers; this hypothesis is supported by the high incidence of melanoma ([Fig. 1](#))^{4,7,8} and similar observations in carriers of germline *TP53* mutations affected by the Li-Fraumeni syndrome.⁴ Moreover, in vitro studies in primary cells from individuals carrying germline *BAP1* mutations revealed increased susceptibility to DNA damage caused by ultraviolet light and ionizing radiation resulting in cell transformation.²⁹ Nevertheless, at present, there is no evidence that yearly CT imaging of the chest, abdomen, and pelvis increases cancer risk in individuals carrying germline *BAP1* mutations. Total ionizing radiation exposure from these yearly scans is approximately 1.1 rem, which is well below the guideline of 5 rem per year allowed for adult research subjects by the NIH Radiation Safety Committee, and this exposure is equivalent to radiation exposures during transcontinental airline flights. Nevertheless, until more information is available regarding the efficacies of various standard imaging modalities, it may be prudent to use MRI and ultrasounds rather than CT scans, unless in the context of a well-designed clinical trial for screening and early detection of cancers in individuals carrying germline *BAP1* mutations, particularly children. Of course, for diagnosis and staging, CT scans, positron emission tomography scans, and radiographs should be used.

Targeting *BAP1* Mutations for Therapy

BAP1 has been implicated in the regulation of homologous recombination^{29,78,79} being recruited to sites of double-strand DNA breaks and regulating error-free DNA repair.⁸⁰ Alterations of *BAP1* may influence individual sensitivity to cisplatin chemotherapy, possibly through modulation of apoptosis and transcriptional

regulation of the *BAP1*-*HCF1*/*E2F1* axis. Therefore, it has been proposed that *BAP1* status is a useful biomarker to stratify patients for platinum-based chemotherapy.⁸¹ Mesothelioma cells have a characteristic highly unstable karyotype⁸² that might be related to chromothripsis.^{45,83,84} The frequent inactivation of DNA repair genes, such as *BAP1*, contributes to genomic instability and offers potential for the use of synthetic lethal approaches targeting DNA repair factors. The use of PARP inhibitors has been suggested as a possible strategy for mesothelioma therapy since 2013,⁸⁵ followed by various preclinical and clinical studies ([Supplementary Table 2](#)). *MiST1* (NCT03654833)⁸⁶ is a single-arm phase II trial, comprising patients with relapsed mesotheliomas harboring somatic *BAP1* deficiency. Although found to have useful activity in mesothelioma, PARP inhibition did not seem to selectively target *BAP1*-deficient mesotheliomas, necessitating alternative synthetic lethal strategies. In vitro studies reached similar conclusions.⁸⁷ The question of whether mesotheliomas in patients with germline mutations in *BAP1* are more sensitive to PARP inhibitors has been recently reported.⁸⁸ In a phase II study of olaparib in malignant mesothelioma, tumor response, progression-free survival (PFS), and overall survival were evaluated in patients with mesotheliomas associated with somatic *BAP1* mutation, germline *BAP1* mutation, or no somatic or germline *BAP1* mutation. Surprisingly, patients with germline *BAP1* mutations had no objective tumor responses and the PFS and OS were significantly decreased compared with patients without germline mutation in *BAP1*. This study highlights that patients with germline mutations in *BAP1* should not receive PARP inhibitors outside the context of a clinical trial.

An ongoing two-part trial in mesothelioma (NCT02860286) with 70 *BAP1* gene-mutated patients using the *EZH2* inhibitor tazemetostat reported preliminary results at ASCO 2020 with a 12-week disease control rate of 54% and 24-week disease control rate of 33%.⁸⁹ The median patient free survival was 18 weeks and median overall survival was 36 weeks; the results have not been published. Preclinical evidence suggests that *BAP1* wild-type status increases sensitivity to gemcitabine.^{90,91} Genomic events associated with the development and progression of different tumors might render certain patients unusually susceptible to therapies that may not have beneficial effects for most.^{92–95} For example, if the growth of some mesotheliomas requires the activation of *NF-κB*, various tyrosine kinases, or certain growth factors, these malignancies may respond to drugs that specifically target these pathways.^{96–101} A recent study assessed the efficacy of the anti-PD-L1 antibody durvalumab plus platinum-pemetrexed chemotherapy in 55 patients with

previously untreated, unresectable pleural mesothelioma. The authors revealed that *BAP1*-mutant tumors had a higher degree of CD8+ T cell infiltration and patients harboring deleterious germline mutations in mesothelioma-predisposing genes, including, but not limited to, genes involved in DNA homologous recombination, achieved significantly longer PFS and OS with the chemoimmunotherapy regimen.¹⁰² In summary, by screening patients with mesothelioma for germline and somatic mutations, we may identify those who may benefit from specific therapies.

Conclusions

Germline *BAP1* mutation is the first molecular positive prognosticator discovered in mesothelioma. Improved survival has been found for mesothelioma, not for other malignancies developing in carriers of germline *BAP1* mutations. Improved survival for mesothelioma in these patients may be attributable to several factors.

First, the biology of these mesotheliomas is less aggressive, as found by the low-grade histology of most of them: epithelioid mesothelioma with a trabecular or tubulopapillary architecture (Supplementary Fig. 1). A similar histology in sporadic mesothelioma is associated with only 18 to 24 months of survival.³

Second, in some patients, the improved survival may be influenced by early detection, as family members are often imaged at the appearance of the first clinical symptoms. Nevertheless, the extended survival predates the discovery of the *BAP1* cancer syndrome—that is, we have patients with mesothelioma who survived 10 or 20+ years in families we studied for more than two decades; eventually studying these families, we discovered that *BAP1* was the mutated gene responsible for mesothelioma.^{1,2,4,20} Therefore, it may be possible to achieve even better survival with screening strategies that may enable us to detect these tumors at an earlier stage.

Third, survival is measured from the time of diagnosis. These patients develop multiple pleural and peritoneal nodules years before they are diagnosed. These nodules are often indolent, although, if biopsied, they may meet the histologic criteria for a diagnosis of mesothelioma. For example, “patient 3” had an 8-year history of recurrent pleural effusions, at which time thoracoscopy result revealed several pleural nodules that histologically were diagnosed as mesothelioma (Fig. 3 and Supplementary Fig. 1). Had “patient 3” undergone VATS and biopsy 8 years earlier, she would have likely been diagnosed with mesothelioma, influencing her “survival.” The transition from mesothelioma in situ (characterized by lack of *BAP1* nuclear staining in

the absence of tumor cell invasion) to invasive mesothelioma takes most likely several years, supporting the importance of lead-time bias in patients with germline *BAP1* mutations.^{103,104}

Although mesotheliomas are common in carriers of germline *BAP1* mutations, these patients often do not die of mesothelioma; they often die because they develop additional cancers, which can be aggressive (Fig. 1). It is therefore important to closely monitor them to detect additional malignancies at an early stage when they may be amenable to curative resection. Similarly, genetic testing should be offered to their family members, and those found to have inherited the *BAP1* mutation should be screened according to the protocol in Table 1 for early cancer detection. The two clinical trials open at the NCI offer a unique opportunity to study carriers of germline *BAP1* mutations and identify the most effective screening and therapeutic approaches.

Given the evidence, we recommend that germline genetic testing should be offered to all patients diagnosed with having mesothelioma. Concerns about the potential legal implications of a germline mutation in patients pursuing or considering asbestos litigation are unique to patients with mesothelioma and seem to adversely affect the willingness of some of them to undergo formal testing and counseling. Work to address these concerns is necessary.

Prognostic scoring systems for mesothelioma have been developed by the European Organization for Research and Treatment of Cancer,¹⁰⁵ the Cancer and Leukaemia Group B,¹⁰⁶ and others.^{107–109} No scoring is universally applied, but the emerging prognostic significance of *BAP1* indicates that it would be beneficial to report this finding in clinical trials to avoid erroneous interpretation—that is, patients carrying germline *BAP1* mutations have a much better prognosis, just a few of them in a phase 1 trial can give the impression of a positive response. Moreover, as nonrandomized phase 2 clinical trials have recently been reported and others are ongoing, *BAP1* status would provide additional context to improve the understanding of the outcomes of the enrolled patient population. Given the simplicity to determine *BAP1* status, this recommendation could be easily implemented.

Establishment of a worldwide registry that records germline variants in *BAP1* and other cancer predisposition genes in mesothelioma that includes treatment information and clinical outcomes will be pivotal in defining the possibly different roles (causation, prognosis, susceptibility to certain therapies, etc.) of these mutations. The use of an international registry analogous to the mesothelioma international database developed by the International Association for the Study of Lung Cancer would facilitate analyses aimed at a more

comprehensive understanding of *BAP1* mutations in mesothelioma.

In conclusion, there is a subset of patients with mesothelioma identified by the presence of germline mutations of *BAP1* and less frequently other genes that exhibit a prolonged survival and benefit from tailored medical attention aimed at both patients and their family members who have inherited the same mutations.

CRediT Authorship Contribution Statement

Michele Carbone, H. Richard Alexander Jr, Harvey I. Pass, David S. Schrump: Conceptualization and supervision.

All Authors: Data collection, Data curation, and Formal analysis.

Michele Carbone, H. Richard Alexander, Jr, Harvey I. Pass, David S. Schrump with critical input from all co-Authors: Writing original draft, Reviewing and editing subsequent drafts.

Michele Carbone, Thomas Krausz, Luciano Mutti, Michael Minaai, Muaiad Kittaneh, Mika Tanji, Sandra Pastorino, Yasutaka Takinishi, Alicia Zolondick: Visualization.

Acknowledgments

We are grateful to Drs. Mohamed H. Abdel-Rahman, Ahmed K. Alomari, Nima Mesbah Ardakani, Brigitte Bressac-de Paillerets, Odile Cabaret, Maria I. Carlo, Dirce Maria Carraro, Kelly B. Cha, Mitchell Cheung, Arnaud De La Fouchardiere, Bernhard J. Eigl, Lenka Foretova, Paolo Ghiorzo, Olivier Harismendy, Martina C. Herwig-Carl, Sonja Klebe, Alwin Krämer, Maartje Nielsen, Jill Ohar, Giuseppe Palmieri, Lorenza Pastorino, Pauliina Repo, Mathias Schwartz, Marc-Henri Stern, Simona Tavorari, Teh Bin Tean, Gianluca Tedaldi, Josphe R Testa, Giovana Tardin Torrezan, Hensin Tsao, Joni A. Turunen, Tetsuo Ushiku, and Richard Watchorn who helped us verify the accuracy of our data.

Supplementary Data

Note: To access the supplementary material accompanying this article, visit the online version of the Journal of Thoracic Oncology at www.jto.org and at <https://doi.org/10.1016/j.jtho.2022.03.014>

References

- Testa JR, Cheung M, Pei J, et al. Germline *BAP1* mutations predispose to malignant mesothelioma. *Nat Genet.* 2011;43:1022-1025.
- Carbone M, Harbour JW, Brugarolas J, et al. Biological mechanisms and clinical significance of *BAP1* mutations in human cancer. *Cancer Discov.* 2020;10:1103-1120.
- Carbone M, Adusumilli PS, Alexander HR Jr, et al. Mesothelioma: scientific clues for prevention, diagnosis, and therapy. *CA Cancer J Clin.* 2019;69:402-429.
- Carbone M, Arron ST, Beutler B, et al. Tumour predisposition and cancer syndromes as models to study gene-environment interactions. *Nat Rev Cancer.* 2020;20:533-549.
- de la Fouchardiere A, Cabaret O, Savin L, et al. Germline *BAP1* mutations predispose also to multiple basal cell carcinomas. *Clin Genet.* 2015;88:273-277.
- Walpole S, Pritchard AL, Cebulla CM, et al. Comprehensive study of the clinical phenotype of germline *BAP1* variant-carrying families worldwide. *J Natl Cancer Inst.* 2018;110:1328-1341.
- Ransohoff KJ, Jaju PD, Tang JY, Carbone M, Leachman S, Sarin KY. Familial skin cancer syndromes: increased melanoma risk. *J Am Acad Dermatol.* 2016;74:423-434; quiz 435-426.
- Haugh AM, Njauw CN, Bublely JA, et al. Genotypic and phenotypic features of *BAP1* cancer syndrome: a report of 8 new families and review of cases in the literature. *JAMA Dermatol.* 2017;153:999-1006.
- Guo R, DuBoff M, Jayakumar G, et al. Novel germline mutations in DNA damage repair in patients with malignant pleural mesotheliomas. *J Thorac Oncol.* 2020;15:655-660.
- Rai K, Pilarski R, Cebulla CM, Abdel-Rahman MH. Comprehensive review of *BAP1* tumor predisposition syndrome with report of two new cases. *Clin Genet.* 2016;89:285-294.
- Yoshikawa Y, Emi M, Nakano T, Gaudino G. Mesothelioma developing in carriers of inherited genetic mutations. *Transl Lung Cancer Res.* 2020;9(suppl 1):S67-S76.
- Kobriniski DA, Yang H, Kittaneh M. *BAP1*: role in carcinogenesis and clinical implications. *Transl Lung Cancer Res.* 2020;9(suppl 1):S60-S66.
- Panou V, Gadiraju M, Wolin A, et al. Frequency of germline mutations in cancer susceptibility genes in malignant mesothelioma. *J Clin Oncol.* 2018;36:2863-2871.
- Hassan R, Morrow B, Thomas A, et al. Inherited predisposition to malignant mesothelioma and overall survival following platinum chemotherapy. *Proc Natl Acad Sci U S A.* 2019;116:9008-9013.
- Betti M, Casalone E, Ferrante D, et al. Germline mutations in DNA repair genes predispose asbestos-exposed patients to malignant pleural mesothelioma. *Cancer Lett.* 2017;405:38-45.
- Daly MB, Pal T, Berry MP, et al. Genetic/familial high-risk assessment: breast, ovarian, and pancreatic, Version 2.2021, NCCN Clinical Practice Guidelines in Oncology. *J Natl Compr Canc Netw.* 2021;19:77-102.
- Bertelsen B, Tuxen IV, Yde CW, et al. High frequency of pathogenic germline variants within homologous recombination repair in patients with advanced cancer. *NPJ Genom Med.* 2019;4:13.
- Pastorino S, Yoshikawa Y, Pass HI, et al. A subset of mesotheliomas with improved survival occurring in carriers of *BAP1* and other germline mutations. *J Clin Oncol.* 2018;36(35):JCO2018790352.

19. Baumann F, Flores E, Napolitano A, et al. Mesothelioma patients with germline BAP1 mutations have 7-fold improved long-term survival. *Carcinogenesis*. 2015;36:76-81.
20. Carbone M, Flores EG, Emi M, et al. Combined genetic and genealogic studies uncover a large BAP1 cancer syndrome kindred tracing back nine generations to a common ancestor from the 1700s. *PLOS Genet*. 2015;11:e1005633.
21. Wiesner T, Obenaus AC, Murali R, et al. Germline mutations in BAP1 predispose to melanocytic tumors. *Nat Genet*. 2011;43:1018-1021.
22. Carbone M, Ferris LK, Baumann F, et al. BAP1 cancer syndrome: malignant mesothelioma, uveal and cutaneous melanoma, and MBLTs. *J Transl Med*. 2012;10:179.
23. Elder DE, Bastian BC, Cree IA, Massi D, Scolyer RA. The 2018 World Health Organization classification of cutaneous, mucosal, and uveal melanoma: detailed analysis of 9 distinct subtypes defined by their evolutionary pathway. *Arch Pathol Lab Med*. 2020;144:500-522.
24. Roe OD, Stella GM. Malignant pleural mesothelioma: history, controversy and future of a manmade epidemic. *Eur Respir Rev*. 2015;24:115-131.
25. Betti M, Aspesi A, Ferrante D, et al. Sensitivity to asbestos is increased in patients with mesothelioma and pathogenic germline variants in BAP1 or other DNA repair genes. *Genes Chromosomes Cancer*. 2018;57:573-583.
26. Chau C, van Doorn R, van Poppel NM, et al. Families with BAP1-tumor predisposition syndrome in The Netherlands: path to identification and a proposal for genetic screening guidelines. *Cancers (Basel)*. 2019;11.
27. Tesch ME, Pater JA, Vandekerkhove G, et al. Concurrent germline and somatic pathogenic BAP1 variants in a patient with metastatic bladder cancer. *NPJ Genom Med*. 2020;5:12.
28. Bononi A, Yang H, Giorgi C, et al. Germline BAP1 mutations induce a Warburg effect. *Cell Death Differ*. 2017;24:1694-1704.
29. Bononi A, Giorgi C, Patergnani S, et al. BAP1 regulates IP3R3-mediated Ca(2+) flux to mitochondria suppressing cell transformation. *Nature*. 2017;546:549-553.
30. Napolitano A, Pellegrini L, Dey A, et al. Minimal asbestos exposure in germline BAP1 heterozygous mice is associated with deregulated inflammatory response and increased risk of mesothelioma. *Oncogene*. 2016;35:1996-2002.
31. Gaudino G, Xue J, Yang H. How asbestos and other fibers cause mesothelioma. *Transl Lung Cancer Res*. 2020;9(suppl 1):S39-S46.
32. Bononi A, Goto K, G, et al. Heterozygous germline BLM mutations increase susceptibility to asbestos and mesothelioma. *Proc Natl Acad Sci U S A*. 2020;117:33466-33473.
33. Carbone M, Kanodia S, Chao A, et al. Consensus report of the 2015 Weinman International Conference on Mesothelioma. *J Thorac Oncol*. 2016;11:1246-1262.
34. Pilarski R, Carlo M, Cebulla C, Abdel-Rahman M. BAP1 tumor predisposition syndrome. In: Adam MP, Ardinger HH, Pagon RA, et al., eds. *GeneReviews((R))*. Seattle: Seattle (WA): University of Washington; 2021.
35. Kittaneh M, Berkelhammer C. Detecting germline BAP1 mutations in patients with peritoneal mesothelioma: benefits to patient and family members. *J Transl Med*. 2018;16:194.
36. Harbour JW, Onken MD, Roberson ED, et al. Frequent mutation of BAP1 in metastasizing uveal melanomas. *Science*. 2010;330:1410-1413.
37. Bhattacharya S, Hanpude P, Maiti TK. Cancer associated missense mutations in BAP1 catalytic domain induce amyloidogenic aggregation: a new insight in enzymatic inactivation. *Sci Rep*. 2015;5:18462.
38. Mashtalir N, Daou S, Barbour H, et al. Autodeubiquitination protects the tumor suppressor BAP1 from cytoplasmic sequestration mediated by the atypical ubiquitin ligase UBE2O. *Mol Cell*. 2014;54:392-406.
39. Richards S, Aziz N, Bale S, et al. Standards and guidelines for the interpretation of sequence variants: a joint consensus recommendation of the American College of Medical Genetics and Genomics and the Association for Molecular Pathology. *Genet Med*. 2015;17:405-424.
40. Hu C, Hart SN, Gnanaolivu R, et al. A population-based study of genes previously implicated in breast cancer. *N Engl J Med*. 2021;384:440-451.
41. Hu C, Hart SN, Polley EC, et al. Association between inherited germline mutations in cancer predisposition genes and risk of pancreatic cancer. *JAMA*. 2018;319:2401-2409.
42. Norquist BM, Harrell MI, Brady MF, et al. Inherited mutations in women with ovarian carcinoma. *JAMA Oncol*. 2016;2:482-490.
43. Pritchard CC, Mateo J, Walsh MF, et al. Inherited DNA-repair gene mutations in men with metastatic prostate cancer. *N Engl J Med*. 2016;375:443-453.
44. Nasu M, Emi M, Pastorino S, et al. High incidence of somatic BAP1 alterations in sporadic malignant mesothelioma. *J Thorac Oncol*. 2015;10:565-576.
45. Yoshikawa Y, Emi M, Hashimoto-Tamaoki T, et al. High-density array-CGH with targeted NGS unmask multiple noncontiguous minute deletions on chromosome 3p21 in mesothelioma. *Proc Natl Acad Sci U S A*. 2016;113:13432-13437.
46. De Rienzo A, Chirieac LR, Hung YP, et al. Large-scale analysis of BAP1 expression reveals novel associations with clinical and molecular features of malignant pleural mesothelioma. *J Pathol*. 2021;253:68-79.
47. Chapel DB, Schulte JJ, Husain AN, Krausz T. Application of immunohistochemistry in diagnosis and management of malignant mesothelioma. *Transl Lung Cancer Res*. 2020;9(suppl 1):S3-S27.
48. Carbone M, Shimizu D, Napolitano A, et al. Positive nuclear BAP1 immunostaining helps differentiate non-small cell lung carcinomas from malignant mesothelioma. *Oncotarget*. 2016;7:59314-59321.
49. Zauderer MG, Jayakumar G, DuBoff M, et al. Prevalence and preliminary validation of screening criteria to identify carriers of germline BAP1 mutations. *J Thorac Oncol*. 2019;14:1989-1994.

50. Star P, Goodwin A, Kapoor R, et al. Germline BAP1-positive patients: the dilemmas of cancer surveillance and a proposed interdisciplinary consensus monitoring strategy. *Eur J Cancer*. 2018;92:48-53.
51. eviQ. *BAP1 – Risk Management*. <https://www.eviq.org.au/cancer-genetics/adult/risk-management/3928-bap1-risk-management#management-of-associated-health-problems>. Accessed December 8, 2020.
52. Ravanpay AC, Barkley A, White-Dzuro GA, et al. Giant pediatric rhabdoid meningioma associated with a germline BAP1 pathogenic variation: a rare clinical case. *World Neurosurg*. 2018;119:402-415.
53. Prasad RN, Gardner UG, Yaney A, et al. Germline BAP1 mutation in a family with multi-generational meningioma with rhabdoid features: a case series and literature review. *Front Oncol*. 2021;11:721712.
54. Walpole S, Hayward NK, Pritchard AL, Johansson PA. Microsimulation model for evaluating the cost-effectiveness of surveillance in BAP1 pathogenic variant carriers. *JCO Clin Cancer Inform*. 2021;5:143-154.
55. Kato K, Gemba K, Ashizawa K, et al. Low-dose chest computed tomography screening of subjects exposed to asbestos. *Eur J Radiol*. 2018;101:124-128.
56. Diego Roza C, Cruz Carmona MJ, Fernandez Alvarez R, et al. Recommendations for the diagnosis and management of asbestos-related pleural and pulmonary disease. *Arch Bronconeumol*. 2017;53:437-442.
57. Rodriguez Portal JA. Asbestos-related disease: screening and diagnosis. *Adv Clin Chem*. 2012;57:163-185.
58. Pass HI, Carbone M. Current status of screening for malignant pleural mesothelioma. *Semin Thorac Cardiovasc Surg*. 2009;21:97-104.
59. Scarlata S, Finamore P, Giannunzio G, Santangelo S, Antonelli Incalzi R. Chest ultrasonography in health surveillance of asbestos related pleural disease. *Lung Cancer*. 2017;111:139-142.
60. Pass HI, Alimi M, Carbone M, Yang H, Goparaju CM. Mesothelioma biomarkers: a review highlighting contributions from the early detection research network. *Cancer Epidemiol Biomarkers Prev*. 2020;29:2524-2540.
61. Filiberti R, Marroni P, Mencoboni M, et al. Individual predictors of increased serum mesothelin in asbestos-exposed workers. *Med Oncol*. 2013;30:422.
62. Park EK, Sandrini A, Yates DH, et al. Soluble mesothelin-related protein in an asbestos-exposed population: the dust diseases board cohort study. *Am J Respir Crit Care Med*. 2008;178:832-837.
63. Novelli F, Bononi A, Wang Q, et al. BAP1 forms a trimer with HMGB1 and HDAC1 that modulates gene x environment interaction with asbestos. *Proc Natl Acad Sci U S A*. 2021:118.
64. Pass HI, Lott D, Lonardo F, et al. Asbestos exposure, pleural mesothelioma, and serum osteopontin levels. *N Engl J Med*. 2005;353:1564-1573.
65. Schwaller B, Celio MR, Doglioni C. Identification of calretinin and the alternatively spliced form calretinin-22k in primary pleural mesotheliomas and in their metastases. *Anticancer Res*. 2004;24:4003-4009.
66. Johnen G, Burek K, Raiko I, et al. Prediagnostic detection of mesothelioma by circulating calretinin and mesothelin—a case-control comparison nested into a prospective cohort of asbestos-exposed workers. *Sci Rep*. 2018;8:14321.
67. Toreyin ZN, Ghosh M, Goksel O, Goksel T, Godderis L. Exhaled breath analysis in diagnosis of malignant pleural mesothelioma: systematic review. *Int J Environ Res Public Health*. 2020;17.
68. Lamote K, Vynck M, Thas O, Van Cleemput J, Nackaerts K, van Meerbeeck JP. Exhaled breath to screen for malignant pleural mesothelioma: a validation study. *Eur Respir J*. 2017;50.
69. Hassan R. Long term follow-up of mesothelioma patients and their family members with germline mutations in BAP1 and other genes. <https://ClinicalTrials.gov/show/NCT03830229>; 2019. Accessed May 9, 2022.
70. Frebourg T, Bajalica Lagercrantz S, Oliveira C, Magenheimer R, Evans DG. European Reference Network GENTURIS. European Reference Network G. Guidelines for the Li-Fraumeni and heritable TP53-related cancer syndromes. *Eur J Hum Genet*. 2020;28:1379-1386.
71. Schrupp D. Prospective evaluation of photon counting computed tomographic imaging, noninvasive (liquid) biopsies, and minimally invasive surgical surveillance for early detection of mesotheliomas in patients with BAP1 tumor predisposition syndrome. <https://ClinicalTrials.gov/show/NCT04431024>; 2020. Accessed May 9, 2022.
72. Greenbaum A, Alexander HR. Peritoneal mesothelioma. *Transl Lung Cancer Res*. 2020;9(suppl 1):S120-S132.
73. Woodard GA, Jablons DM. Surgery for pleural mesothelioma, when it is indicated and why: arguments against surgery for malignant pleural mesothelioma. *Transl Lung Cancer Res*. 2020;9(suppl 1):S86-S91.
74. Robinson BW, Lake RA. Advances in malignant mesothelioma. *N Engl J Med*. 2005;353:1591-1603.
75. Aggestrup LM, Hestbech MS, Siersma V, Pedersen JH, Brodersen J. Psychosocial consequences of allocation to lung cancer screening: a randomised controlled trial. *BMJ Open*. 2012;2:e000663.
76. Bauml JM, Troxel A, Epperson CN, et al. Scan-associated distress in lung cancer: quantifying the impact of “scanxiety”. *Lung Cancer*. 2016;100:110-113.
77. Comertpay S, Pastorino S, Tanji M, et al. Evaluation of clonal origin of malignant mesothelioma. *J Transl Med*. 2014;12:301.
78. Yu H, Pak H, Hammond-Martel I, et al. Tumor suppressor and deubiquitinase BAP1 promotes DNA double-strand break repair. *Proc Natl Acad Sci U S A*. 2014;111:285-290.
79. Ismail IH, Davidson R, Gagne JP, Xu ZZ, Poirier GG, Hendzel MJ. Germline mutations in BAP1 impair its function in DNA double-strand break repair. *Cancer Res*. 2014;74:4282-4294.
80. Masclef L, Ahmed O, Estavoyer B, et al. Roles and mechanisms of BAP1 deubiquitinase in tumor suppression. *Cell Death Differ*. 2021;28:606-625.
81. Oehl K, Vrugt B, Wagner U, et al. Alterations in BAP1 are associated with cisplatin resistance through inhibition of apoptosis in malignant pleural mesothelioma. *Clin Cancer Res*. 2021;27:2277-2291.
82. Ribotta M, Roseo F, Salvio M, et al. Recurrent chromosome 6 abnormalities in malignant mesothelioma. *Monaldi Arch Chest Dis*. 1998;53:228-235.

83. Mansfield AS, Peikert T, Smadbeck JB, et al. Neoantigenic potential of complex chromosomal rearrangements in mesothelioma. *J Thorac Oncol.* 2019;14:276-287.
84. Mansfield AS, Peikert T, Vasmatzis G. Chromosomal rearrangements and their neoantigenic potential in mesothelioma. *Transl Lung Cancer Res.* 2020;9(suppl 1):S92-S99.
85. Pinton G, Manente AG, Murer B, De Marino E, Mutti L, Moro L. PARP1 inhibition affects pleural mesothelioma cell viability and uncouples AKT/mTOR axis via SIRT1. *J Cell Mol Med.* 2013;17:233-241.
86. Fennell DA, King A, Mohammed S, et al. Rucaparib in patients with BAP1-deficient or BRCA1-deficient mesothelioma (MiST1): an open-label, single-arm, phase 2a clinical trial. *Lancet Respir Med.* 2021;9:593-600.
87. Rathkey D, Khanal M, Murai J, et al. Sensitivity of mesothelioma cells to PARP inhibitors is not dependent on BAP1 but is enhanced by temozolomide in cells with high-schlafen 11 and low-O6-methylguanine-DNA methyltransferase expression. *J Thorac Oncol.* 2020;15:843-859.
88. Ghafoor A, Mian I, Wagner C, et al. Phase 2 study of olaparib in malignant mesothelioma and correlation of efficacy with germline or somatic mutations in BAP1 gene. *JTO Clin res rep.* 2021;2:100231.
89. Zauderer MG, Szlosarek PW, Le Moulec S, et al. Safety and efficacy of tazemetostat, an enhancer of zeste-homolog 2 inhibitor, in patients with relapsed or refractory malignant mesothelioma. *J Clin Oncol.* 2020;38(15):9058-9058.
90. Guazzelli A, Meysami P, Bakker E, et al. BAP1 status determines the sensitivity of malignant mesothelioma cells to gemcitabine treatment. *Int J Mol Sci.* 2019;20.
91. Okonska A, Buhler S, Rao V, et al. Functional genomic screen in mesothelioma reveals that loss of function of BRCA1-associated protein 1 induces chemoresistance to ribonucleotide reductase inhibition. *Mol Cancer Ther.* 2020;19:552-563.
92. Ivanov SV, Miller J, Lucito R, et al. Genomic events associated with progression of pleural malignant mesothelioma. *Int J Cancer.* 2009;124:589-599.
93. Mutti L, Peikert T, Robinson BWS, et al. Scientific advances and new frontiers in mesothelioma therapeutics. *J Thorac Oncol.* 2018;13:1269-1283.
94. Tsao AS, Lindwasser OW, Adjei AA, et al. Current and future management of malignant mesothelioma: a consensus report from the National Cancer Institute Thoracic Malignancy Steering Committee, International Association for the Study of Lung Cancer, and Mesothelioma Applied Research Foundation. *J Thorac Oncol.* 2018;13:1655-1667.
95. McCambridge AJ, Napolitano A, Mansfield AS, et al. Progress in the management of malignant pleural mesothelioma in 2017. *J Thorac Oncol.* 2018;13:606-623.
96. Goparaju CM, Blasberg JD, Volinia S, et al. Onconase mediated NFK β downregulation in malignant pleural mesothelioma. *Oncogene.* 2011;30:2767-2777.
97. Ramos-Nino ME, Blumen SR, Sabo-Attwood T, et al. HGF mediates cell proliferation of human mesothelioma cells through a PI3K/MEK5/Fra-1 pathway. *Am J Respir Cell Mol Biol.* 2008;38:209-217.
98. Altomare DA, Menges CW, Xu J, et al. Losses of both products of the Cdkn2a/Arf locus contribute to asbestos-induced mesothelioma development and cooperate to accelerate tumorigenesis. *PLOS ONE.* 2011;6:e18828.
99. Nasu M, Carbone M, Gaudino G, et al. Ranpirnase interferes with NF- κ B pathway and MMP9 activity, inhibiting malignant mesothelioma cell invasiveness and xenograft growth. *Genes Cancer.* 2011;2:576-584.
100. Pass HI, Brewer GJ, Dick R, Carbone M, Merajver S. A phase II trial of tetrathiomolybdate after surgery for malignant mesothelioma: final results. *Ann Thorac Surg.* 2008;86:383-389; discussion 390.
101. Pass HI, Mew DJ, Carbone M, et al. Inhibition of hamster mesothelioma tumorigenesis by an antisense expression plasmid to the insulin-like growth factor-1 receptor. *Cancer Res.* 1996;56:4044-4048.
102. Forde PM, Anagnostou V, Sun Z, et al. Durvalumab with platinum-pemetrexed for unresectable pleural mesothelioma: survival, genomic and immunologic analyses from the phase 2 PrE0505 trial. *Nat Med.* 2021;27:1910-1920.
103. Churg A, Galateau-Salle F, Roden AC, et al. Malignant mesothelioma in situ: morphologic features and clinical outcome. *Mod Pathol.* 2020;33:297-302.
104. Hidaka K, Takeda T, Kinoshita Y, et al. Development of mesothelioma in situ and its progression to invasive disease observed in a patient with uncontrolled pleural effusions for 15 years. *Pathol Int.* 2020;70:1009-1014.
105. Fennell DA, Parmar A, Shamash J, et al. Statistical validation of the EORTC prognostic model for malignant pleural mesothelioma based on three consecutive phase II trials. *J Clin Oncol.* 2005;23:184-189.
106. Herndon JE, Green MR, Chahinian AP, Corson JM, Suzuki Y, Vogelzang NJ. Factors predictive of survival among 337 patients with mesothelioma treated between 1984 and 1994 by the Cancer and Leukemia Group B. *Chest.* 1998;113:723-731.
107. Nowak AK, Francis RJ, Phillips MJ, et al. A novel prognostic model for malignant mesothelioma incorporating quantitative FDG-PET imaging with clinical parameters. *Clin Cancer Res.* 2010;16:2409-2417.
108. Brims FJ, Meniawy TM, Duffus I, et al. A novel clinical prediction model for prognosis in malignant pleural mesothelioma using decision tree analysis. *J Thorac Oncol.* 2016;11:573-582.
109. Opitz I, Friess M, Kestenholz P, et al. A new prognostic score supporting treatment allocation for multimodality therapy for malignant pleural mesothelioma: a review of 12 years' experience. *J Thorac Oncol.* 2015;10:1634-1641.